



THE
HOMES
GROUP



Oaklands Avenue, Sidcup, DA15 8NB
Guide Price £650,000 - £680,000



Guide Price £650,000 - £680,000 The Homes Group are delighted to offer to the market this beautifully presented four bedroom semi-detached family home backing onto parkland and is located in a sought after road in Sidcup. The property has plenty of off road parking to the front and a good size garden to the rear with a large log cabin/summerhouse. From the entrance hall there is a separate lounge and doorways into the sitting room and 37'9" x 7'4" Kitchen/diner. Through both the sitting room and kitchen is the living room which has two sets of double doors that open out on to the patio area. There is also a cloakroom with utility area to the ground floor too. From the gallery style landing there are the four double bedrooms and family bathroom. There is a en-suite bathroom with separate shower cubicle and a free-standing roll top bath.

Entrance Hall

Lounge

13'1" x 11'9" into bay (3.99m x 3.58m into bay)

Sitting Room

11'3" x 9'9" extending to 12'10" (3.435 x 2.984 extending to 3.934)

Living Room

16'8" x 10'9" extending to 14'5" (5.092 x 3.301 extending to 4.401)

Kitchen/Diner

37'9" x 7'4" (11.51m x 2.24m)

Utility/Cloakroom

Landing

Bedroom One

12'0" x 11'3" (3.675 x 3.430)

En-Suite Bathroom

7'8" x 7'0" (2.345 x 2.153)

Bedroom Two

11'10" x 12'8" (3.617 x 3.864)

Bedroom Three

10'11" to wardrobes x 11'8" into bay (3.332 to wardrobes x 3.571 into bay)

Bedroom Four

18'6" x 8'8" narrowing to 6'9" (5.661 x 2.660 narrowing to 2.058)

Bathroom

6'6" x 5'4" (1.992 x 1.633)

Rear Garden

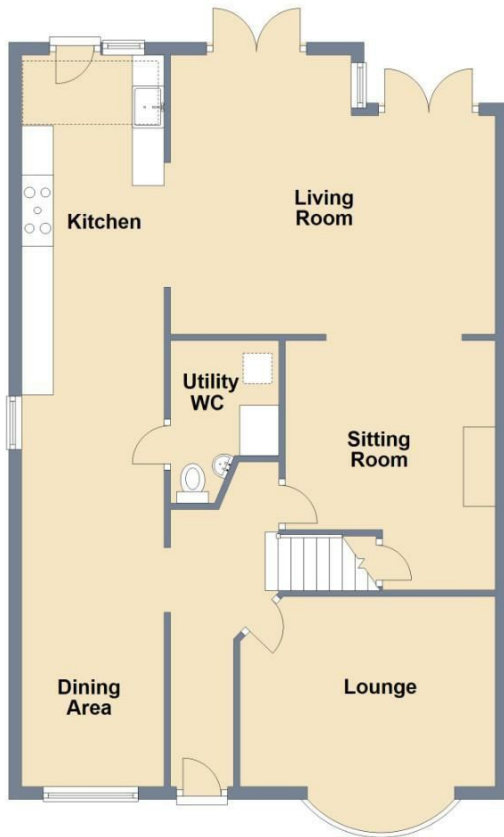
Summerhouse

Front Garden

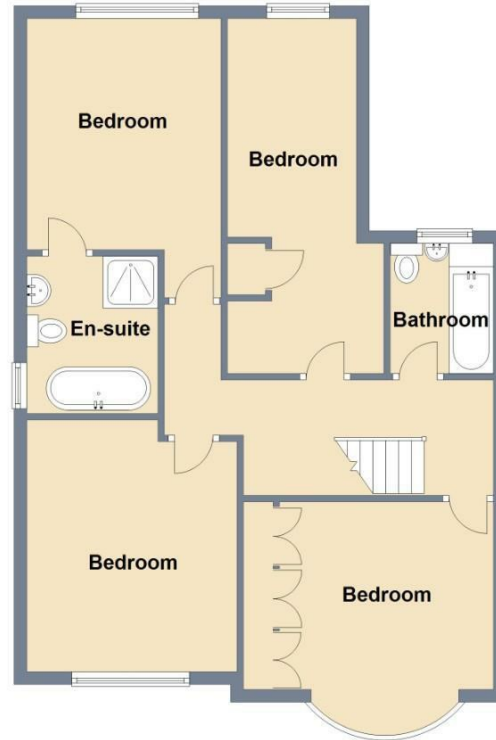




Ground Floor
Approx. 83.9 sq. metres (903.3 sq. feet)



First Floor
Approx. 69.4 sq. metres (747.3 sq. feet)



Total area: approx. 153.3 sq. metres (1650.6 sq. feet)



Energy Efficiency Rating		
	Current	Potential
Very energy efficient - lower running costs		
(92 plus) A		
(81-91) B		
(69-80) C		72
(55-68) D	56	
(39-54) E		
(21-38) F		
(1-20) G		
Not energy efficient - higher running costs		
England & Wales	EU Directive 2002/91/EC	

Viewing

Please contact our The Homes Group Office on 01322 532 889 if you wish to arrange a viewing appointment for this property or require further information.

These particulars, whilst believed to be accurate are set out as a general outline only for guidance and do not constitute any part of an offer or contract. Intending purchasers should not rely on them as statements of representation of fact, but must satisfy themselves by inspection or otherwise as to their accuracy. No person in this firm's employment has the authority to make or give any representation or warranty in respect of the property.